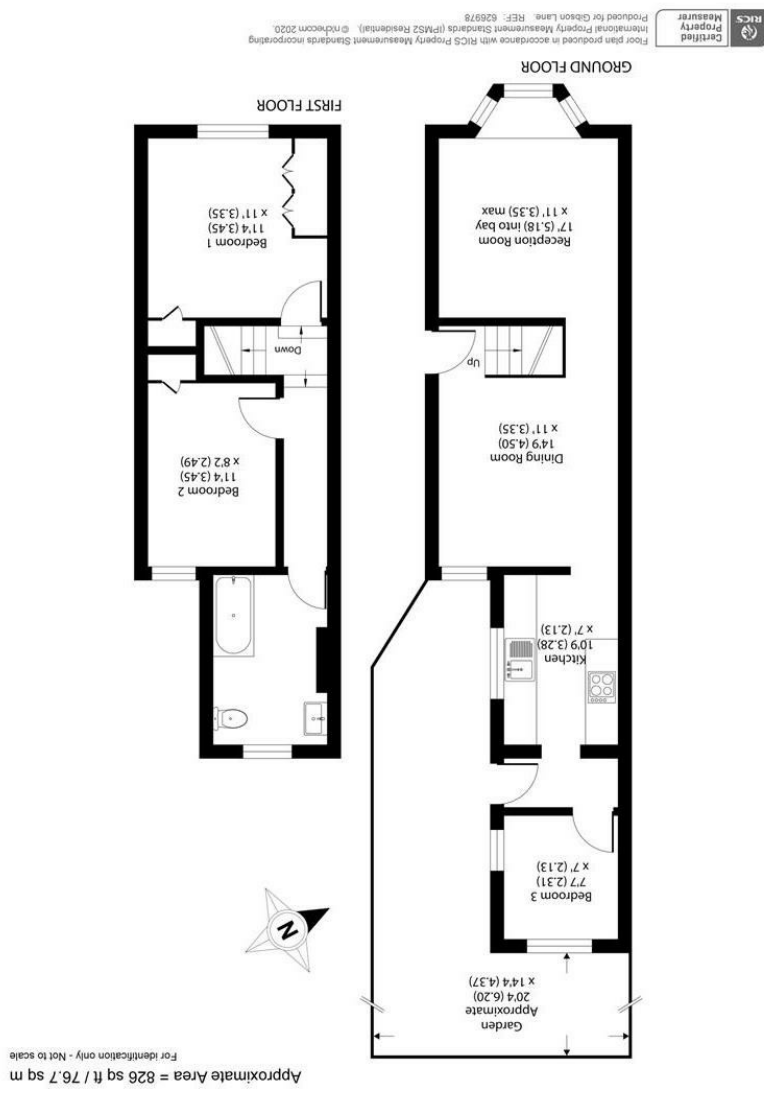
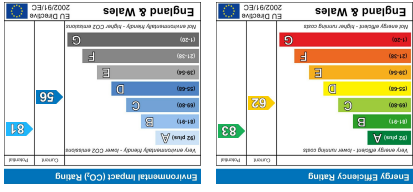


All appliances listed in these details are only 'as seen' and have not been tested by Gibson Lane, nor have we sought certification of warranty or service, unless otherwise stated. Measurements, areas and distances are approximate. Floor plans and photographs are for guidance purposes only and must not be relied upon for any purpose. These details are offered on the understanding that all negotiations are made through this company. Neither these particulars, nor verbal representations, form part of any offer or contract, and their accuracy cannot be guaranteed.



34 Richmond Road
 Kingston upon Thames
 Surrey
 KT2 5ED
 www.gibsonlane.co.uk
 Tel: 020 8546 5444



62 Portland Road
 Kingston Upon Thames KT1 2SH



Portland Road

Kingston Upon Thames KT1 2SH

Asking Price £640,000

A delightful two bedroom Victorian semi-detached family home, situated in this sought after road in between both Kingston and Surbiton town centres.

Description

An attractive two bedroom Victorian semi detached home, situated in this sought after road in between both Kingston and Surbiton town centres. Internally the house is presented to an exceptional standard and features well balanced accommodation containing two double bedrooms, modern bathroom, third bedroom/study, fitted kitchen, dining room and delightful front reception room with bay window. Outside there is a Southerly aspect rear garden complete with storage shed, plus a front garden. The property also offers plenty of potential to extend (Subject to Consent).

Situation

The property is situated towards the eastern end of Portland Road, which is a sought after residential road moments from the highly regarded St Johns school. Kingston Town centre is approximately 1/2 a mile away and Surbiton station with its fast and frequent 18 minute one stop service to Waterloo is approximately one mile away.

Tenure: Freehold
Local Authority: Kingston Upon Thames

